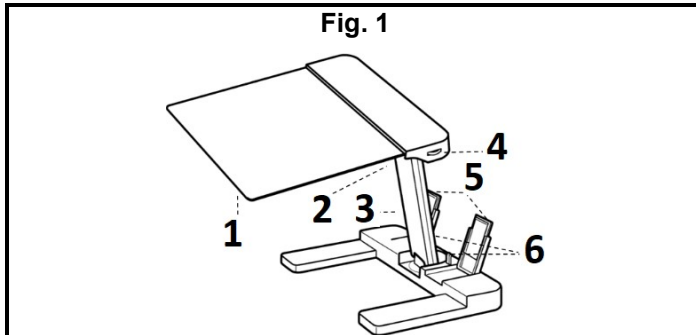


## FULL PAGE READING MAGNIFIER WITH LED LIGHTING

## INSTRUCTION MANUAL

PLEASE READ THE MANUAL BEFORE FIRST USE. KEEP THIS MANUAL FOR FUTURE REFERENCE

## PRODUCT DESCRIPTION



1. Magnifying lens
2. Battery compartment
3. Swivel arm
4. ON/ OFF and adjustable LED dimmer switch
5. Adjustable holder (x2)
6. clip

- Magnification: X3
- LEDS (x13): 0.2W, 24-26LM, 3.0-3.2V per piece

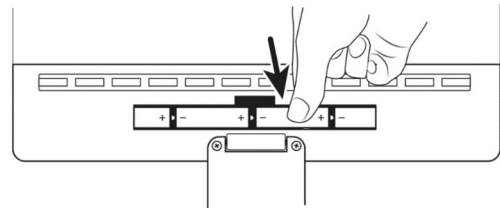
## BATTERY INSTALLATION

Batteries required: 4 x 1,5V AA (non fournies)



Before replacing the batteries, make sure the switch is in "OFF" position (Ensure it has been completely turned towards „OFF“ position).

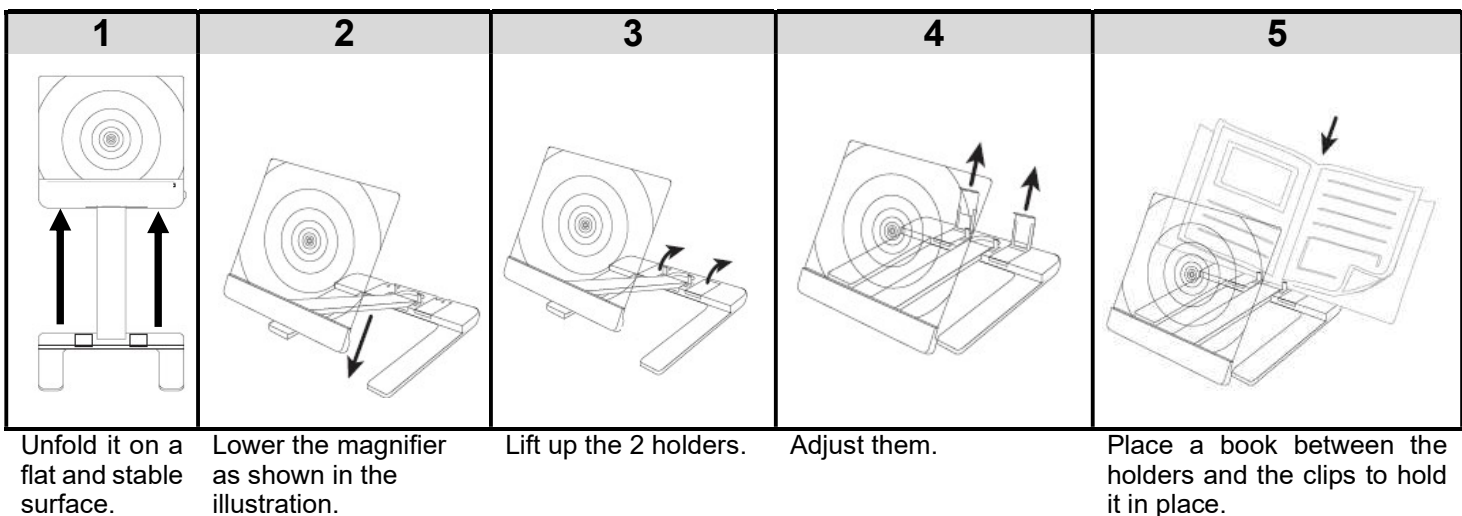
Open the battery compartment at the back of the magnifier. While paying attention to the polarity indicated inside, position 2 batteries to the left, one battery to the far right then the last one in the middle. See the illustration in the opposite.



## OPERATION

Before first use, remove the protective film from the magnifying lens.

## 1. INSTALLATION/



Note: The clips are adjustable. Only take them out and insert them into one of the 4 slots according to the thickness of the book.

## 2. LED LIGHT

“ON” = Turn on & increase brightness

Turn the wheel to ON position till you hear a click to turn on. Keep on turning slowly to increase the brightness.

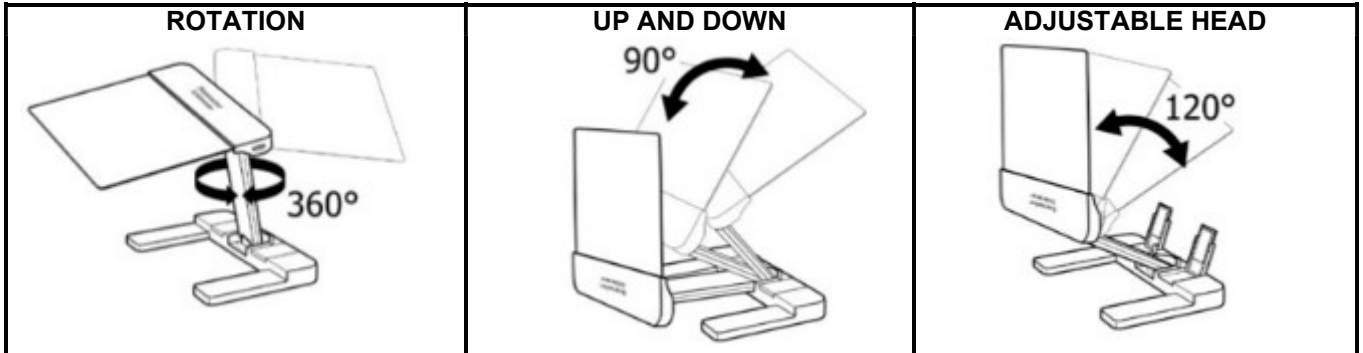
“OFF” = Decrease brightness & turn off

Turn the wheel to OFF position slowly to dim the light. Keep turning till you hear a click to turn off.



## 3. DIFFERENT POSITIONS

Make sure the head is straight before changing the magnifier to different positions.



## WARNINGS

- **WARNING: TO PREVENT FIRE HAZARD, DO NOT EXPOSE THE MAGNIFYING GLASS TO THE DIRECT SUNLIGHT!**
- Never look directly at the sun through the lens or with the naked eye because permanent and irreversible eye damage may result.
- DO NOT shine light directly into eyes.
- DO NOT immerse in water or other liquids.
- This is not a toy. Keep away from children.
- **ATTENTION:** In any case, never look directly at the LED without eye protection.
- Never look at other strong light sources with the magnifier.
- Keep away from sources of heat, direct sunlight, humidity, water or other liquids.
- Do not short-circuit, modify, disassemble or puncture it.
- Handle the product with care. A blow, a shock, or a fall, even from a low height, can damage it.

## WARNINGS ON BATTERY

- To avoid leakage, please take all batteries out if the lights are dim or if the magnifier is not going to be used for a long time.
- Never mix alkaline, standard (carbon-zinc) and rechargeable (nickel hydride).
- Don't mix new and used batteries.
- Don't attempt to recharge non rechargeable batteries.
- Remove rechargeable batteries from the device (if possible) before charging them.
- Rechargeable batteries must always be recharged under adult supervision.
- Remove used batteries.
- Never short the power supply terminals.
- Always use the recommended or equivalent battery types.
- Always pay attention to battery polarity.

## CLEANING AND MAINTENANCE

- Use a soft cloth to clean the lens.
- Do not use alcohol or other types of corrosive cleaning solvents to clean transparent panel.

**WARNING:** You should not dispose of this device with your household waste. A selective collection system for this type of product is implemented by your local authorities. Please contact your local authorities to find out how and where collection takes place. These restrictions apply because electrical and electronic devices contain dangerous substances that have harmful effects on the environment or on human health and must be recycled.

This symbol indicates that electrical and electronic devices are collected selectively. The symbol shows a waste container crossed out with an X symbol.



Imported by EML- Trading name: Prodis, 1 rue de Rome F-93110 Rosny-sous-Bois - Made in PRC/ Fabriqué en RPC

Marketed by EUROTOPS VERSAND GMBH Elisabeth-Selbert-Str. 3 D-40764 LANGENFELD

