

# LIGHTER CAMERA

## INSTRUCTION MANUAL

PLEASE READ THE MANUAL BEFORE FIRST USE. SAVE IT FOR FUTURE REFERENCE!



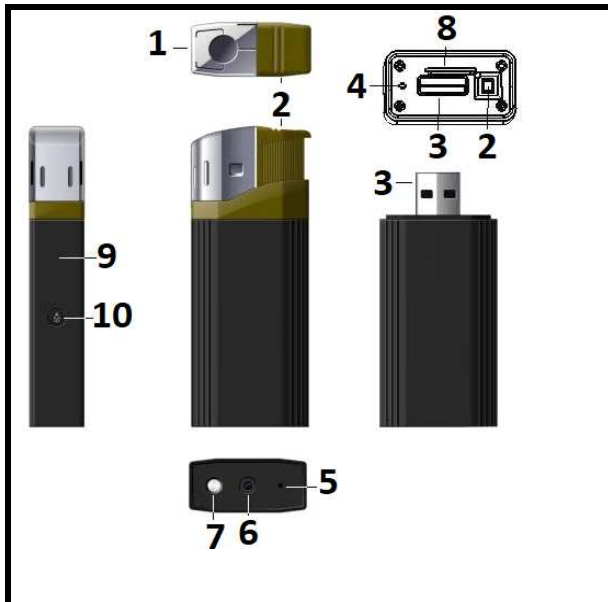
THE LIGHTER CAMERA IS DELIVERED UNCHARGED. ON FIRST TIME USE, CHARGE IT FOR 6 HOURS.

WHEN RECORDING A VIDEO OR TAKING A PHOTO, MAKE SURE THAT THE SIDE OF THE DEVICE CONTAINING THE SLOT FOR MICRO SD CARD (8) SHOULD BE FACING DOWNWARDS. THIS WILL AVOID THE VIDEOS AND PHOTOS BEING UPSIDE DOWN WHEN VIEWING.

### SYSTEM REQUIREMENTS

- **Windows operating system :** Windows XP/Vista/Windows 7 or later version.
- **Macintosh operating system :** Mac OS X version 10.4.11/10.5.8/10.6.4 or later version.

### PRODUCT DESCRIPTION

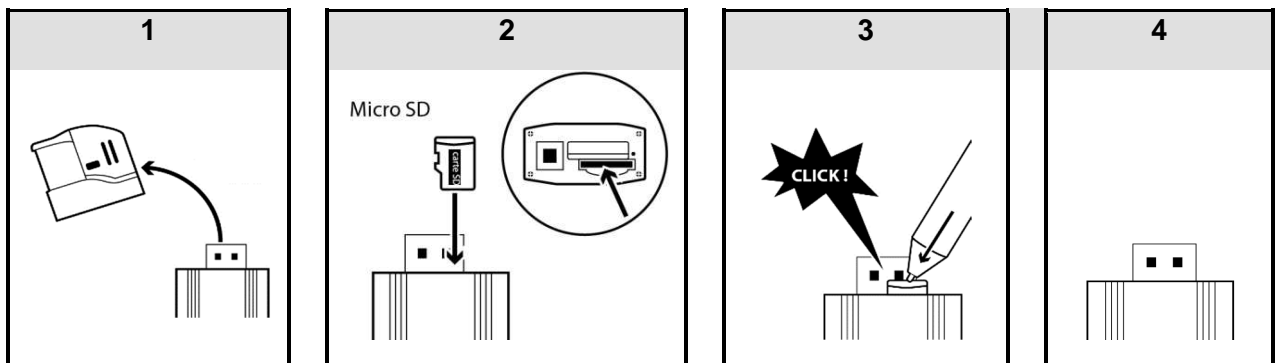


1. Lighter's head
2. Ignition switch
3. USB port
4. Reset hole
5. ON/ OFF button/ video recording
6. Camera lens: **Do not cover the camera lens when you are taking pictures or recording videos.**
7. LED flashlight
8. Slot for micro SD card
9. LED indicator
10. Flashlight ON/ OFF

Accessories included: USB cable + CD Driver

### INSERTING THE MICRO SD CARD

Before first use, insert a micro SD card (maximum capacity: 32 GB, not included).



When the card is fully inserted, you will hear a click

Note: To remove the SD card, also proceed as step 2.

## CHARGING THE LIGHTER CAMERA

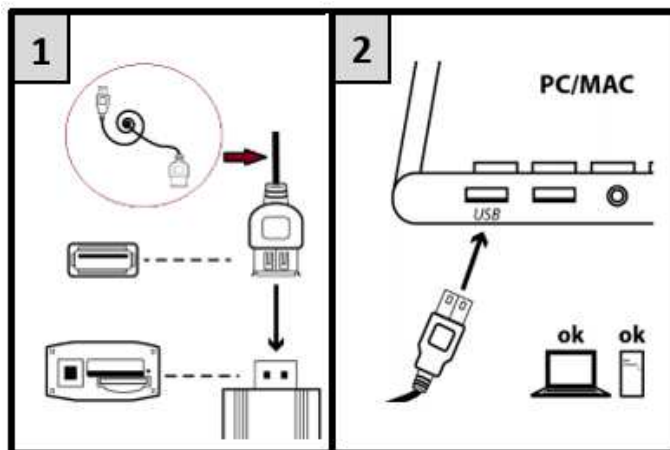
Charging time:

About 5-6 hours

### NOTES :

- To preserve your battery, please use the device until the battery discharges totally, and charge at its maximum capacity during the 5 first times of use.
- If the device has not been used for a long time, please fully recharge it before use.
- In order to maximize the capacity of the battery storage, please continue to charge for 30mins to one hour after the indicator light becomes blue.

### CONNECTION TO USB CABLE (included)



### CHARGING

1. After connection to USB port of computer, the red LED indicator turns on. A few seconds later, the unit vibrates and flashes 3 times in red and blue, and then the indicator becomes red and blue when charging.

**Note:** If no memory card is inserted, the blue indicator will be solid red, flashing in blue when charging.

2. When fully charged, it becomes blue.
3. Then disconnect it to USB port of computer, it vibrates twice and the LED turns off.

## SETTING TIME AND DATE



- If the battery is not charged enough, discharged or has not been charged for several days, the time may reset to factory default settings. In that case, set the correct date and time again.
- Always make sure that the device is sufficiently charged to allow the update of the time and date. So if you plan to make photos and videos regularly, charge it regularly.

Setting recording hour and date (For PC only)

1. Connect the device to your computer.
2. The file directory containing the photos and videos automatically displays. If it does not display, go to "My Computer" and double-click the removable drive corresponding to the memory of the device.
3. Right-click just next to DCIM file.

4. Click "NEW" and then "Text document".
5. Open it and write date and time in the format below: YEAR.MONTH. DAY HOUR:MINUTES:SECONDS (for example: if the date is 31 January 2013 and time is 9:30:30, write 2013.01.31 9:30:30).
6. Save it under file name: "time".
7. Unplug the device.
8. Turn it on to confirm the file backup. The file will be saved, deleted from file directory and will not display in file directory.
9. Take a video to ensure the date and time are correct.

## OPERATION

### HOW TO TURN ON THE LIGHTER CAMERA

1. Long press ON/ OFF button (5) till the blue indicator is on.
2. After a few seconds, the indicator flashes and the device vibrates 3 times at the same time. Then the indicator is blue: the device enters standby mode.

#### **Auto Power off**

**When the device enters stand-by mode and is not used for about 2 minutes, it will vibrate and shut down automatically.**

### HOW TO TURN IT OFF

Note: To power off the device, you should be in video mode. See procedure below.

1. Long press ON/ OFF button (5) till the blue indicator flashes twice and the device vibrates twice at the same time. The indicator is in video mode.
2. Short press power button (5), the indicator flashes twice, and the device vibrates twice at the same time. Then the indicator turns off indicating the device is off.

**Note: The latest photos and videos will be saved and then the device will turn off.**

### TAKING PHOTOS

**DO NOT COVER THE CAMERA LENS WHEN YOU ARE TAKING PICTURES OR RECORDING VIDEOS.**

1. Turn on your lighter camera if it is off.
2. In standby mode (blue light), short press the power button (5). The indicator flashes once; the photo is taken and saved.

Note: Repeat step 2 to take other photos.

### RECORDING A VIDEO

#### **Recording a video**

In standby mode (blue light), long press the power button (5). The indicator light flashes twice and the device vibrates twice at the same time. Video recording starts when the indicator turns off.

#### **Stopping a video**

Short press power button (5), the indicator flashes twice and the device vibrates twice at the same time. The indicator turns off indicating the video is saved.



### WEBCAM FUNCTION

- In order to get the webcam function, you should install the STK03N 2 driver (for WINDOWS 7, 8 or 10) or STK02N 2.3. (for WIN XP/ 2000) contained in the included CD, into your computer.
- Make sure that a video communication software such as Skype, MSN, Messenger, Facebook, etc. is initially installed.




- WEBCAM function does not work on MAC systems.
- If you use Facebook, make sure to shut down the Client's software named "amcap.exe" first if it is opened.

## WINDOWS 7, 8 and 10

1. Double-click  Lecteur DVD RW (F:).
2. Install the STK03N driver by double-clicking  STK03N.
3. After installing the driver, extract the "Webcam driver" and double-click it.



4. Double-click  amcap icon. Then select "Options" and "Preview".




5. Connect the device to the computer.


Note: Before connecting the device, make sure that there is no SD card.

6. Shut down "amcap". Open communication software. Open the video communication software and use the device connected to USB port of computer via included USB cable for online chat videos.


## WIN XP/ 2000

1. Repeat steps 1 and 2 of procedure of WINDOWS 7-8-10.  
Note: The driver name is STK02N 2.3.  STK02N 2.3
2. Connect the device to the computer.

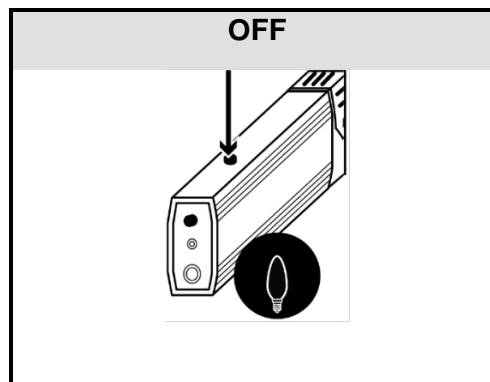
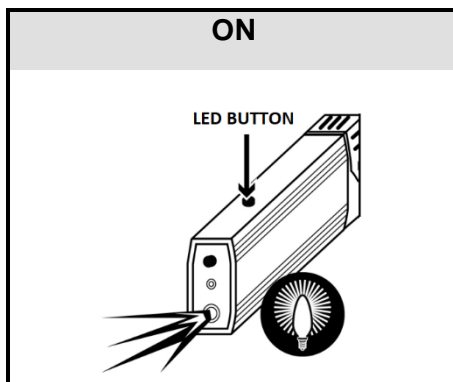
Note: Before connecting the device, make sure that there is no SD card.

3. Double-click "My Computer" icon, and then icon  Standard Camera.

Note: This procedure is necessary to check whether the webcam correctly works.

4. Shut down  Standard Camera. Open the video communication software and use the device connected to USB port of computer via included USB cable for online chat videos.

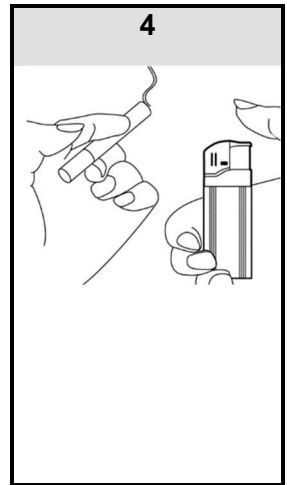
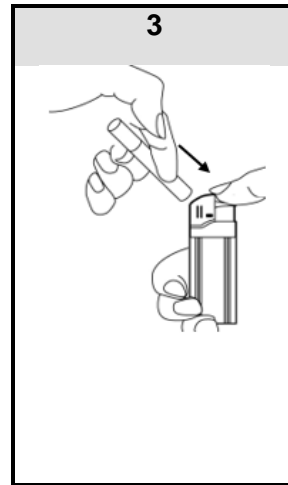
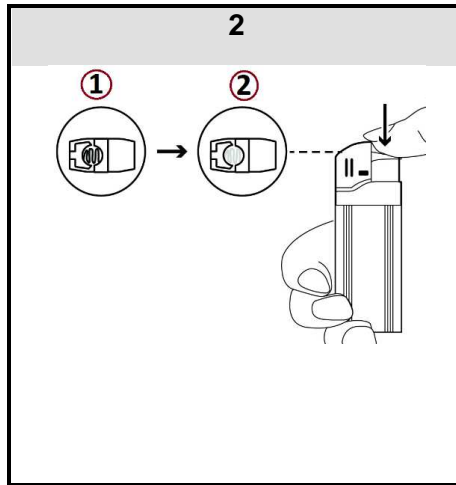
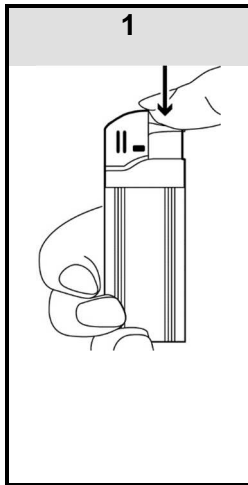
## LED FUNCTION



## LIGHTER FUNCTION



Ensure the device is well charged before using lighter function!



## WARNINGS

- The device works as a classic cigarette-lighter once charged. It is not a toy. Keep out of reach of children and persons with reduced physical, sensory or mental capabilities.
- Make sure that the head of the lighter is correctly inserted before using the lighter.
- DO NOT insert any object inside the lighter. Only cigarettes should be inserted when it is lit.
- Release the ignition switch once the cigarette is lit.

## HOW TO VIEW RECORDED DATA ON COMPUTER



- Make sure the device is well inserted into the USB port of your computer.
- When connecting it to computer, wait a few minutes so that the computer can recognize it as a removable disk. Do not carry out any operation during the procedure of recognition.
- If the computer fails to recognize it, connect it to another USB port of computer. If this other attempt also fails, restart the computer and connect the device to its USB port.
- Before removing the device from the computer, the removable disk must be removed properly and safely.

**IMPORTANT:** Make sure to transfer your photos and videos regularly onto your computer before the memory card gets full, otherwise your device will overwrite the photos and videos on your former ones.

Connect the lighter camera to USB port of your computer. Once recognized, you can visualize/ delete/ transfer the photos and videos contained in the DCIM file.

## TECHNICAL SPECIFICATIONS

VIDEO FORMAT	AVI
VIDEO RESOLUTION	1920*1080
VIDEO CODING	MJPEG
PICTURE FORMAT	JPG 1280*720
IMAGE PIX	5M
AUDIO FORMAT	WAV
USB	USB 2.0
WORKING HOURS AFTER A FULL CHARGE	About 60 minutes (Video recordings)
CHARGING VOLTAGE	DC5V
BATTERY	Lithium-ion, 300mAh, 3.7V

## TROUBLESHOOTING

Problems	Solutions
Low battery: Blue light flashing during 3 seconds (the device will first save the current recording file, and then shut down).	- Charge the device for 5 hours.
No card: Blue light flashing	- Insert the card
No video: Card is badly inserted or damaged.	- Insert the card properly or replace with a new card.
The device malfunctions or does not work.	- Insert tip of a pen in reset hole.

## WARNINGS

- Keep away from sources of heat, direct sunlight, humidity, water or other liquids.
- Do not immerse in water.
- Do not subject it to strong impacts and do not throw it.
- Do not drop, short-circuit, modify, disassemble or puncture it.
- It is not a toy. Keep out of reach of children.
- Store in a cool, dry and well-ventilated place.

**WARNING:** You should not dispose of this device with your household waste. A selective collection system for this type of product is implemented by your local authorities. Please contact your local authorities to find out how and where collection takes place. These restrictions apply because electrical and electronic devices contain dangerous substances that have harmful effects on the environment or on human health and must be recycled.

This symbol indicates that electrical and electronic devices are collected selectively. The symbol shows a waste container crossed out with an X symbol.

Imported by PRODIS SAS, 1 rue de Rome, 93110 Rosny-sous-Bois, France/ Made in P.R.C

Marketed by EUROTOPS VERSAND GMBH D-40764 LANGENFELD

